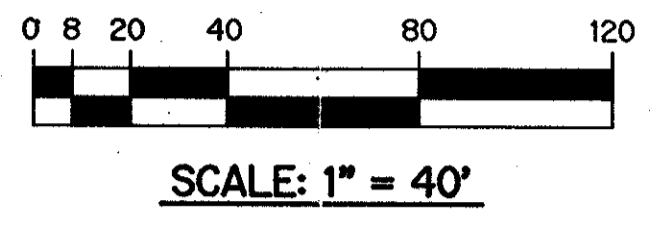


RAINBOW LAKES - TRACT "A"

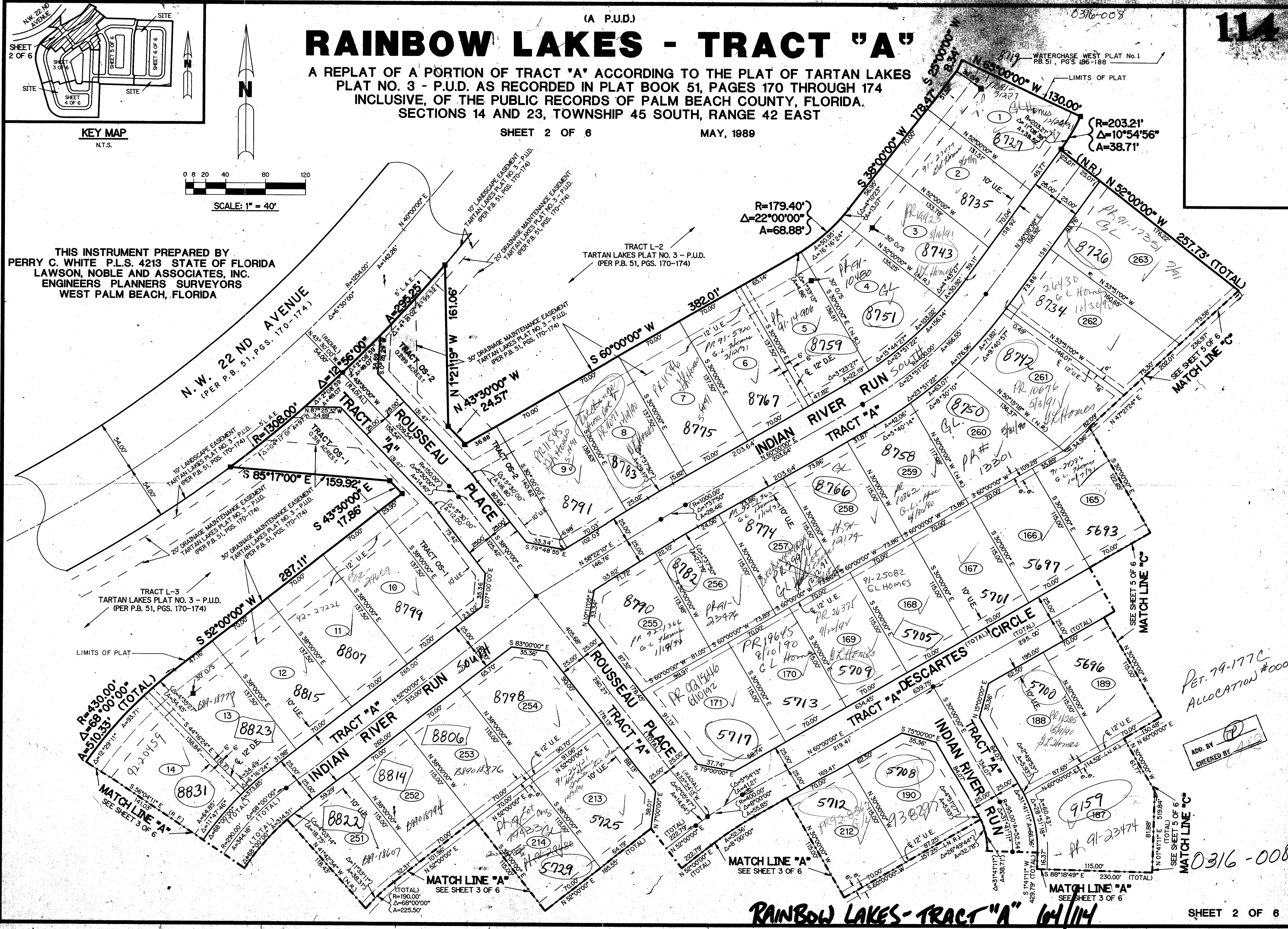
(A P.U.D.)

A REPLAT OF A PORTION OF TRACT "A" ACCORDING TO THE PLAT OF TARTAN LAKES PLAT NO. 3 - P.U.D. AS RECORDED IN PLAT BOOK 51, PAGES 170 THROUGH 174 INCLUSIVE, OF THE PUBLIC RECORDS OF PALM BEACH COUNTY, FLORIDA. SECTIONS 14 AND 23, TOWNSHIP 45 SOUTH, RANGE 42 EAST

SHEET 2 OF 6 MAY, 1989



THIS INSTRUMENT PREPARED BY
PERRY C. WHITE P.L.S. 4213 STATE OF FLORIDA
LAWSON, NOBLE AND ASSOCIATES, INC.
ENGINEERS PLANNERS SURVEYORS
WEST PALM BEACH, FLORIDA



SUBDIVISION - Rainbow Lakes - Tract "A"
 BOOK 164 PAGE 114
 FLOOD HAZARD MAP # 1908B
 20' WIDE RTS
 QUAD 14 24 34
 ZIP CODE 33417
 79-177
 NAME Rainbow Lakes Tract "A" (A.P.U.D.)
 123 45 142
 TAZ 441

114

PET. 79-177C
 ALLOCATION #0001

ADD. BY
 CHECKED BY